

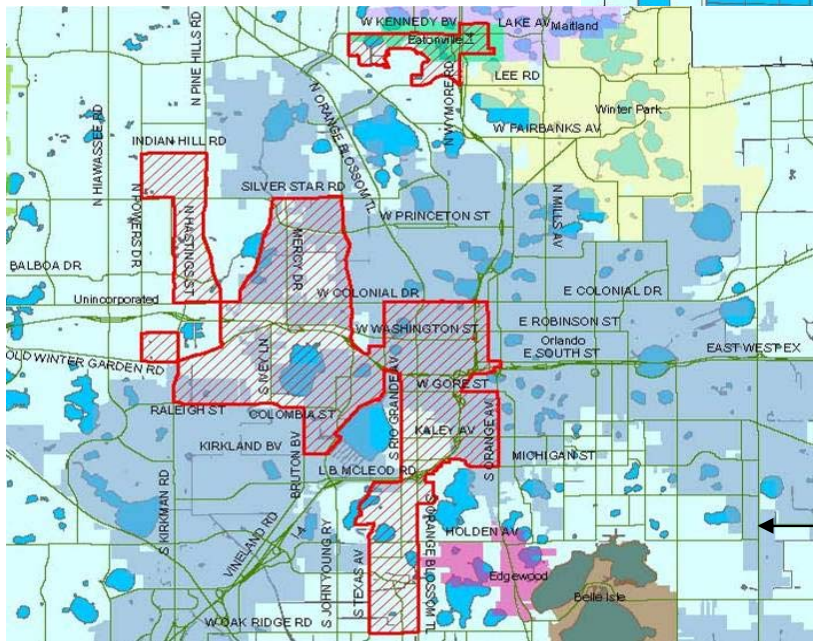
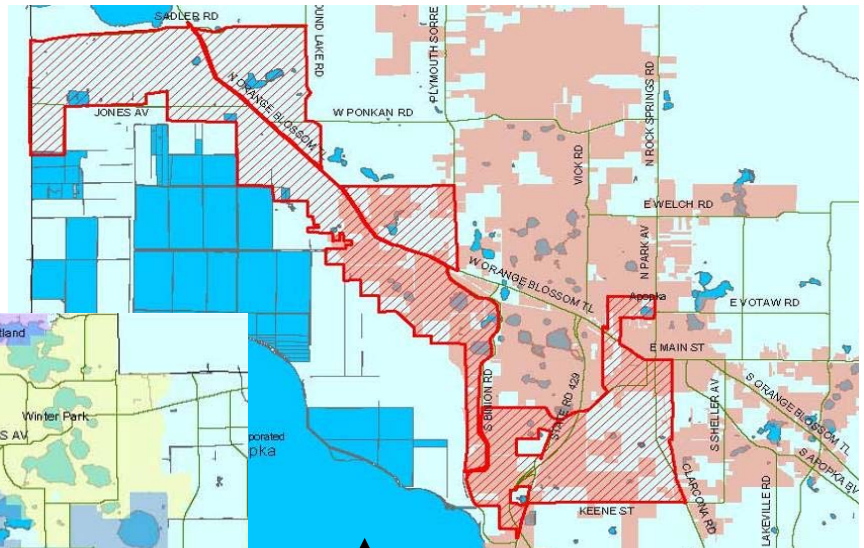


Various incentives of the Enterprise Zone Program include:

- Up to 30% tax credit for each new job created.
- Up to \$10k tax refund for Business Machinery & Equipment .
- Up to \$10k tax refund for Building Materials.
- Up to 96% tax credit of ad valorem taxes paid.

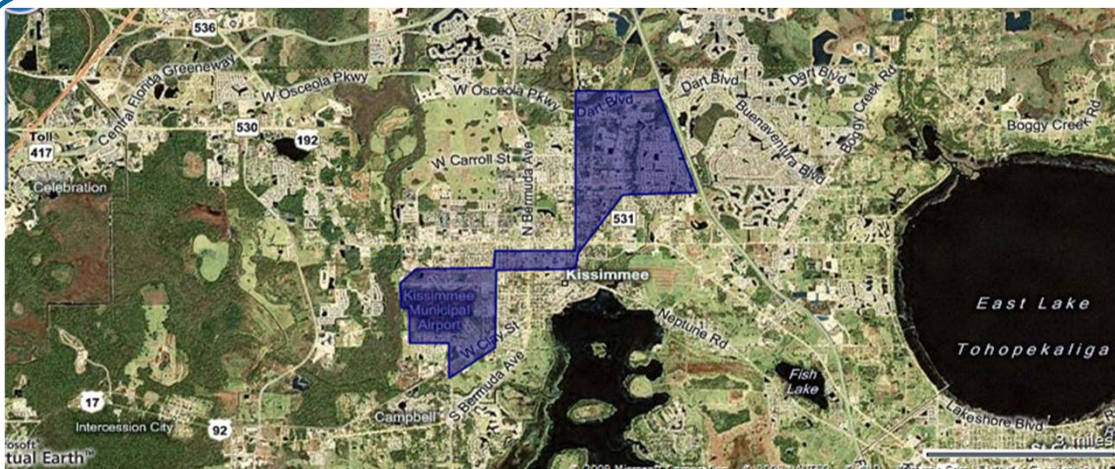
Source: Enterprise Florida

An Enterprise Zone is a specific geographic area targeted for economic revitalizing. Enterprise Zones encourage economic growth and investment in distressed areas by offering tax advantages and incentives to businesses locating within the zone boundaries. Metro Orlando has three Enterprise Zones: two in Orange County and one in Osceola County.



EZ-4802 : South Apopka Enterprise Zone (16.84 square miles)

EZ-4801 : Orange County Enterprise Zone incl. Eatonville & Orlando (16.8 square miles)



EZ-4901 : Kissimmee / Osceola County Enterprise Zone (5 square miles)

